

Central Area Update

A p r i l 2 0 1 0



2010 Central Area PDD

It's now history! And what a fun and informative event it was! A huge (and I mean HUGE) thank you to co-chairs Mary Guest and Gretchen Walker who did a fabulous job of securing outstanding speakers for our event! I've e-mailed our keynote speaker and told her to let me know if she's ever presenting in the area again so I can "crash" the event where she is speaking. I heard positive comments around the room were attendees were saying they could listen to her all day.

Our Central Area business meeting was quite productive. We made serious headway on our Central Area Scholarship and will be voting on committee members for that scholarship this coming July so the first scholarship can be awarded in July 2011.

The hotel staff worked very hard to please us (which was a challenge due to the fraternity formal that took place while we were there). All things considered, I thought they did a great job.

Diane's installation ceremony included a delicious meal and provided a relaxing environment which was welcome after two very busy days. We all wish her well in her year as NEOPA's President.

A huge thank you to all who attended this year's CAPDD! Next year, Indiana will be the place to be.

Inside this issue:

2010 CAPDD Central Area Breakfast	1
Affiliates Welcome 2010 Special Dates	2
NAEOP 2010 Notes	2
State Fund-raisers Thoughts & Prayers Central Area Web Sites	3
National Updates Membership Update	4
Pamper Yourself Inspiration	5
Lola's Note	6

What a treat to have NAEOP President Pam Posey and NAEOP Executive Director Angela Meyer join us for our 2010 meeting and the Saturday sessions (Pam was able to stay for and participate in the installation ceremony). It was fun to watch as they received their honorary NEOPA memberships (presented during NEOPA's business meeting).

Central Area Breakfast

The latest report for this Summer's Central Area Breakfast indicates 66 people are registered for the Central Area Breakfast so far. While that is a good number, we can certainly do better than that! After all, we have a challenge looming over Lisa's head — only 34 more and she will be required to meet the challenge.

We have one more item to add to our agenda for this breakfast meeting. In addition to our elections for NAEOP Committees (actual members), and our recognition of members' accomplishments, we will be selecting members (one from each state) to serve on the Central Area Scholarship Committee. One of those will need to be named as the Central Area Scholarship Chairman

and the group will be charged with the implementation process for Central Area's very first scholarship which we should see awarded in July 2011. It's been a long time coming but thanks to the efforts of our scholarship development committee, this project is coming to fruition.

Of course this is a meeting you won't want to miss so if you have not already registered for the Central Area Breakfast, make sure to do so prior to the deadline. We need you there to make our group complete!



Affiliates

Congratulations to those Central Area Affiliates who have affiliated for the 2009-10 year. They are:

- ◇ Cass County AEOP (MO), Pam Steele, Pres.
- ◇ Columbia WEOP (MO), Lynita Little, Pres.
- ◇ Dogwood Hills AEOP (MO), Eileen Walker, Pres.
- ◇ Illinois AEOP, Nancy Van Vickle, Pres.
- ◇ Independence AEOP (MO) Michelle Hess, Pres.
- ◇ Indiana AEOP PP, Marcia Denney, Pres.
- ◇ Kansas AEOP PP, Julia Thompson, Pres.
- ◇ Kankakee Iroquois EOP, Mary Beth Mathis, Pres.
- ◇ Kansas AEOP, Judy O'Malley, Pres.
- ◇ KSDE AEOP (KS), Gwen Kramer, Pres.
- ◇ Lincoln Public Schools, AOPA (NE), Susan Bell, Pres.

Central Area Update

- ◇ Missouri AEOP, Debbie Geib, Pres.
- ◇ NE Dept. of Ed. OPA, Alice Fournell, Pres.
- ◇ Nebraska EOPA, Carol Reed, Pres.
- ◇ Nebraska EOPA—PP, Deb Ryan, Pres.
- ◇ Omaha EOPA, Noretta Howard, Pres.
- ◇ Peoria AEOP (IL), Jackie Voorhees, Pres.
- ◇ The *Frolikers* PP Assoc. (NE), Jan Harris, Pres.
- ◇ UNOPA (NE), Peg Johnson, Pres.
- ◇ Wayne EOPA, Joyce Trevett, Pres.
- ◇ West Suburban AEOP (IL), Jeanne Jasek, Pres.
- ◇ Wichita AEOP (KS), Brenda Decker, Pres.



Welcome!

I have not been notified of any new members at this time.

Recruit!

New members who allow me to be their recruiter, can receive a \$5 discount on their membership fee. Please contact me or send their membership form to me with a check for \$40 and I will cover the rest!

2009-10 Special Dates to Remember



May 1 — Affiliates renewal deadline

Eastland Suites, Urbana, IL

May 15 — Filing Date for PSP Applications

October 22, 2010 — Nebraska EOPA Workshop, Lincoln, NE

July 5-9 — NAEOP Annual Conference, Kansas City, MO

October 28-30 — Missouri AEOP Conference, Blue Springs, MO

October 15-17 — Illinois State Conference,

NAEOP 2010 NOTES

Another successful and informative 2010 meeting was held in conjunction with our CAPDD. Many questions were answered and at this point, I think everyone is feeling much more comfortable in their shoes, so to speak. At any rate, ready or not, here it comes!

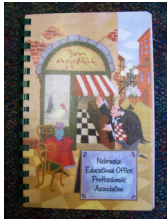
I'm sure we are all feeling anxious about the events our states are hosting. Fortunately, we have some wonderful state leaders who have a handle on the situation and will make sure each event is outstanding. Of course, they are doing this only with the help of many

of you who have been generous with your time and talents. I extend a huge thank you to each of you!

The registrations continue to come in and it sounds like we may even extend the registration deadline in an effort to increase our participation for this summer's events. If you have not yet sent in your registration, please do so right away. We not only want you to experience a National Conference, but we still need volunteers to help us pull off the best NAEOP conference ever!



State Fund-raisers



NEOPA (Nebraska) continues to sell cookbooks. These cookbooks are only \$10.00 each, making them an excellent inexpensive gift for any occasion. If you are interested in purchasing a cookbook, please contact either Linda Luedtke, lluedtke1@unl.edu or Barbara Homer, bhomer@mail.unomaha.edu.

Kansas is holding a raffle to raise money for the 2010 NAEOP conference. The brown and cream tone Afghan is 54 X 72 inches. Tickets are \$1.00 each or \$5.00 for 6 and will be available through the end of May (I bought my tickets) with the drawing being held in June at the Kansas board meeting. For more information feel free to contact Charlotte Zeller at czeller@ksde.org.



NAREOP and NAEOP are partnering for the NAREOP service project for the 2010 conference. Items will go to two child advocacy centers, one in Illinois and one in Missouri. If you would like to donate items and bring them to CAPDD, please do so. Some items needed are Wal-Mart and McDonalds gift cards, postage (Forever) stamps, board games for young children, Nerf footballs and baseballs and play doh. For a complete list or more information, contact Martha Carson at marthavcarson@aol.com.

We are eager to hear of fund-raisers taking place in other states. If your state is hosting a fund-raiser, please contact me with the details so I can add those to our next update.

Thoughts, Prayers, Etc.

NAEOP Past President Butch Bender is awaiting her next greeting from YOU! She loves hearing from her NAEOP family so take some time to make her day! Her address is: The Lutheran Home, 7511 University Ave. – Room #E229, Cedar Falls, IA 50613.

Lorna and Marty at 394 N 8th, Kankakee, IL 60901.

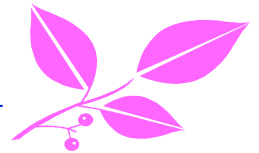
Sandy Wiseman, IL, son underwent brain stem surgery April 30. Get well wishes can be sent to Dwayne at Sandy's address: 308 Gareth Lane, Schaumburg, IL 60193.

NAEOP President Pam Posey's husband, Truitt, had his second eye surgery in March. He has level 4 eyesight failure. Prayers for a full recovery would be appreciated. Wishes can be sent to Pam and Truitt at: 161 J C Bryant Road, Hattiesburg, MS 39401.

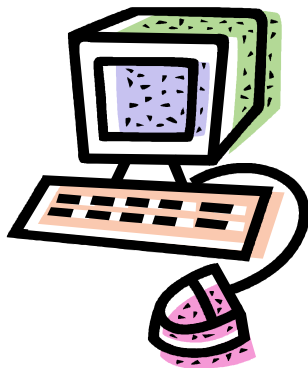
NAEOP President Donna Berger's Sister, Charleen, passed away on April 18. Sympathies can be sent to Donna at 31074 9th Ave. S, Federal Way, WA 98003.

Lorna Vinson, IL, recently lost her brother-in-law. Expressions of sympathy can be sent to

Janice Schumann's brother, Marvin, has been diagnosed with a brain tumor. Greetings can be sent to Janice at 7610 Vernon Rd. SE, Everett, WA 98205-1213.

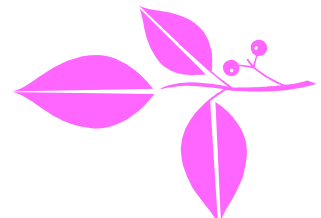


Central Area Web Sites



Our Central Area Web sites have changes from time to time. If you've not taken a look lately, make sure to do so today! They're also noted on NAEOP's Web site under the "affiliations" tab along with all other NAEOP affiliates Web sites. They have a wealth of information so check them out!

- Illinois: www.iaeop.com/
- Indiana: <http://iaeop.lcsc.k12.in.us/>
- Kansas: <http://kaeop.org/>
- Missouri: <http://www.maeop.net>
- Nebraska: <http://neopa.unl.edu>



National Updates

This month I want to once again stress the benefits offered by belonging to NAEOP's list-serve. Unfortunately, not nearly enough of our members are taking advantage of this benefit.

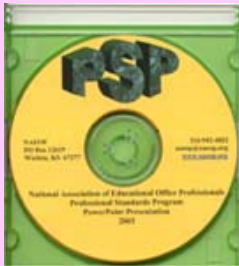
Our conference co-chairs have been utilizing the list-serve to entice members to attend the NAEOP conference in Kansas City. They did an "Are You Smarter Than a Fifth Grader" article and have also sent a beautiful picture of Kansas City (view from the hotel) taken at night. It was breathtaking! I can't wait to see what will come next!

You are truly missing out if you are not a member of NAEOP's list-serve. Some of you may be leery because you feel you already receive too much e-mail. Trust me, I can empathize with those concerns. But, you get what you give and this list-serve has helped many NAEOP members with work-related situations that could have consumed a great deal of their time in formulation and creation. Thanks to the list-serve, they don't have to re-create the wheel. Our wonderful network of NAEOP friends are always willing to share their practices which alleviate the need to invent a

process from the ground up. Let your network provide you with some of the foundation and give yourself a break. Your supervisor will be impressed and may even be more supportive of your professional activities when they see you utilizing the many tools offered!

Don't wait—join NAEOP's list-serve today at www.naeop.org/mail.htm. You'll be rewarded with networking opportunities and strengthened friendships.

Angela, NAEOP's Executive Director, has proven to be invaluable to the Central Area while we have been planning the 2010 NAEOP Conference. The co-chairs, our advisor, Pam Posey (NAEOP President), and I appreciate her efforts and advice very much. Angela made the extra effort to attend our CAPDD so she would be there for yet another 2010 planning meeting. This was a meeting that she was not required to attend and was not paid to attend. She did this because of her dedication to our organization. Because of this dedication, NEOPA was honored to make Angela an Honorary member of Nebraska's organization. Angela—the Central Area thanks you as well for going above and beyond!



NAEOP
Professional
Standards Program
PowerPoint
Presentation
2003

Revised, January
2009

\$10.00
(shipping included)

P r o f e s s i o n a l S t a n d a r d s P r o g r a m

PSP Forms are now available on disk.

Send a formatted disk to:

NAEOP

P.O. Box 12619

Wichita, KS 67277-2619

Designate if for PC or Macintosh.

Forms are in Microsoft Word

NAEOP Membership Update

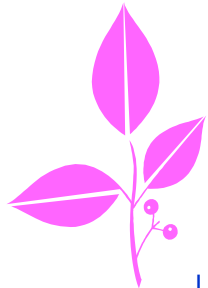
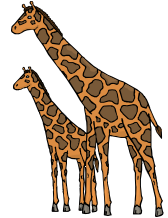
The next membership report is due in **May**. As of February, the Central Area had a total of 461 active NAEOP members. This total reflects a decrease since February. The numbers fluctuate during the year. The breakdown by state is: Illinois – 94 (down 1); Indiana – 37 (down 1); Iowa – 19 (down 1); Kansas – 74 (same); Missouri – 70 (down 3); Nebraska – 167 (down 1). Please continue to welcome new NAEOP members. And for those who are coming up on those renewal deadlines — keep your membership continuous.

It is important to recruit all year long! **Keep in mind that as a bonus, if you allow me to sponsor/recruit a brand new NAEOP member, I would be happy to pay \$5 of their membership fee.**



Pamper Yourself

- * Treat yourself to soft ice cream in a waffle cone, dipped in chocolate.
- * Let the sun shine in and enjoy the warmth!
- * Pick yourself a spring bouquet.
- * Do you know someone who accomplishes a lot? Ask him or her to teach you techniques.
- * Invite some friends over and have a tea party.
- * Turn off the electric lights and spend the evening in candlelight.
- * Keep a sense of humor about life.
- * Don't let small snits turn into big fights. Find out what the problem is and deal with it now.
- * Take out the old family photo album and tell stories about the pictures, for hours on end.
- * Enjoy the intimacy of your close friendships.
- * Make a list of the twenty-five best things that have ever happened to you.
- * Wash and vacuum your car. It will be a pleasure to drive!
- * Get up 15 minutes earlier so you can move at a more relaxed pace.
- * Take a trip to the zoo while the weather is still comfortable.
- * Plant your tomatoes in pots that you can keep close to your home. Picking is much easier when you don't have to walk to the garden.
- * Eliminate the busy work in your life to find more time for fun.
- * Take your kids or grandkids to a park and blow some bubbles with them.
- * Call a friend and arrange a picnic lunch where you can catch up on each other's lives.



Inspiration



- The Dash -

I read of a man who stood to speak
at the funeral of a friend.

He referred to the dates on her tombstone
From the beginning to the end.

He noted that first came the date
Of her birth;
And spoke of the following date with tears

But he said what mattered most of all
Was the dash between those years

For that dash represented all the time that she spent
Alive on earth and now
Only those who loved her know
What that little time is worth.

For it matters not how much we own
. . . The cars . . . The house . . . The cash
What matters most is how we live and love
And how we spend our dash.

So think about this long and hard;
Are there things you'd like to change?
For you never know how much time is left
That can still be rearranged.

If we could just slow down enough
To consider what's true and real . . .
And always try to understand
The way other people feel.

And be less quick to anger and
Show appreciation more and
Love the people in our lives
Like we never loved before.

If we treat each other with respect
And more often wear a smile
Remembering that this special dash
Might only last a little while.

So, when your eulogy is being read . . .
Will you life's actions to rehash,
Would you be proud of the things they say
About you and your dash?
By Linda Ellis



Lola's Note

Isn't Spring fantastic? Aside from the allergy issues, I love to see the trees in bloom, the flowers everywhere, and the GREEN grass. The renewal of everything renews my spirit!

Ramsey and Sarah are currently trying to find a place to live while they teach. It would appear that Wallace and the surrounding small towns have plenty of homes for sale, but rentals are few and far between. Every time I come up with a contact, I'm asking for leads. They just may have to live in North Platte and commute the 45 miles each day.

Wes did quite well at the State Science Fair. He won first place in his division and won a few other awards to go with that gold medal. His next big event will be his confirmation in our church on May 2. He is really excited about the process coming to a conclusion. Last week's commitment ceremony was wonderful although quite lengthy.

Every time I think I'm done interviewing, something new comes up. I'm down to one opening for the fall semester but do have an interview set up which will hopefully take care of that process. Evaluations are, for the most part, done. I've completed mine but there are a few left to present by my student supervisors. Now we have finals kits (snacks from home) to distribute. We've already had a couple residents (out of approximately 1,700) pick up check-out packets so the end is near!

Summer conferences will be taking over three of my desks beginning May 13 (which is pushing it for me since we still have people moving out on May 8). Then my duties will change somewhat for the summer months.

We're looking forward to hosting Special Olympics this summer. The athletes will be staying with us on campus and volunteers will be everywhere! The families will be staying throughout the city but not on-campus. This is a new adventure for us and I am very excited to cheer the athletes on!

Lisa is probably tired of emails from me as I've been forwarding many Central Area related files to her. I haven't heard that her hard drive is full yet but we'll keep working on that. She is anxious to take the reins and I'm getting closer to being ready to hand them over. That doesn't mean I'm tired of being involved, it just means I'm ready for another challenge and additional opportunities.

As I close for this month, I admit, I'm weary. Closing of schools is upon us (or almost upon some of us) for the academic year and I wish you all smooth sailing in the process. Continue to enjoy the students in these last days. Understand the students are anxious to begin their summer fun and activities and at times it is just difficult for them to contain all of their anxiety. Be patient and smile!

Lola



NEOPA President Carol Reed, CEOE (right) presented Mary Guest, CEOE (left), and Gretchen Walker, CEOE (right) with gifts in gratitude for the OUTSTANDING job they did in co-chairing our 2010 Central Area Professional Development Day!

Kudos to Mary and Gretchen!