

# Central Area Update

May 2010

## 2010 Central Area PDD



Quilt Finished – 2010 Central Area PDD Quilters (participants) gathered for the Central Area Professional Development Day in Lincoln, Nebraska, on April 23-24, sponsored by the Nebraska Educational Office Professionals Association. The opportunity existed for many members of KIMINI to “*Piece Together Their Professional Career*” and quilt (network/learn) by participating with many fabrics (sessions) to enhance their knowledge and skills.

Our keynote speaker, Michelle Carlson, presented “*Communication Quilt: All the Pieces for Success.*” Michelle noted the seven common mistakes in communicating with others: 1) We think we are not human, 2) We focus on the incompetence of others, 3) We feel the need to control, 4) We equate rank, etc. with smartness, 5) We excuse our flaws, 6) We are not aware of our behavior on others, 7) We think we have nothing to learn.

She also reminded everyone that “Effective Communication is a Choice and Takes Practice!”

The afternoon fabric (sessions) provided good insight into “*Ethics in Business,*” How to “*Escape from Meeting Hell,*” “*Team Building,*” and to be an “*Effective Public Speaker.*”

A guideline from the Ethics session, is to ask

yourself three questions: 1) Is it legal? (civil law or company policy), 2) Is it ethical? (fair to all concerned), 3) Will this negatively affect my organization?

The retirees were treated to an afternoon tour of the International Quilt Study Museum on the University of Nebraska-Lincoln campus.

We were honored to host NAEOP President, Pam Posey, and NAEOP Executive Director, Angela Meyer, during the conference. Both were given Honorary NEOPA memberships.

Throughout the conference we continued to stitch together our quilt. Becoming better listeners, building our confidence and leadership skills and providing our offices with well-rounded skills and talents.

The conference ended with NEOPA’s installation banquet. Diane Wasser, CEOE, was installed as the 2010-2011 NEOPA President. Pam Posey took part in the installation ceremony, conducted by Lola Young.

Planning the CAPDD/NEOPA Spring Conference was an insightful and rewarding experience. Thank you for allowing us to serve in this way.

Gretchen Walker, CEOE  
Mary Guest, CEOE

### Inside this issue:

2010 CAPDD Central Area Breakfast	1
Affiliates 2009-10 Special Dates	2
Welcome NAEOP 2010 Notes	2
State Fund-raisers Thoughts & Prayers Central Area Web Sites	3
National Updates Membership Update	4
Pamper Yourself Inspiration	5
Lola’s Note	6

## Central Area Breakfast



Currently 74 people are registered for the 2010 Central Area Breakfast. Lisa will be required to meet her challenge with just 26 more. Please encourage others to sign up for this Breakfast!

Have you been putting some thought into which committees you would like to serve on for NAEOP? Make sure your colleagues know where your interests lie so they can nominate you. Remember these elections will take place only at the Area Breakfasts . . . there will not be elections for committee members during General Sessions (providing more time for professional

growth (briefings).

In addition, we will also be electing one person to serve from each state on the Central Area Scholarship Committee (one to serve as Chair of the committee). We are looking forward to seeing the first NAEOP Central Area Scholarship awarded at next year’s Central Area Breakfast.

This is a meeting you won’t want to miss so if you have not already registered for the Central Area Breakfast, make sure to do so now. We need you there to make our group complete!

# Affiliates



Congratulations to those Central Area Affiliates who have affiliated for the 2009-10 year. They are:

- ◇ Cass County AEOP (MO), Pam Steele, Pres.
- ◇ Columbia WEOP (MO), Lynita Little, Pres.
- ◇ Dogwood Hills AEOP (MO), Eileen Walker, Pres.
- ◇ Illinois AEOP, Nancy Van Vickle, Pres.
- ◇ Independence AEOP (MO), Michelle Hess, Pres.
- ◇ Indiana AEOP, Gloria Patterson, Pres.
- ◇ Indiana AEOP PP, Marcia Denney, Pres.
- ◇ Jefferson City PSAEOP, Lisa Lopez, Pres.
- ◇ Kansas AEOP PP, Julia Thompson, Pres.
- ◇ Kankakee Iroquois EOP, Mary Beth Mathis, Pres.
- ◇ Kansas AEOP, Judy O'Malley, Pres.
- ◇ KSDE AEOP (KS), Gwen Kramer, Pres.
- ◇ Lincoln Public Schools, AOPA (NE), Susan Bell, Pres.
- ◇ Missouri AEOP, Debbie Geib, Pres.
- ◇ NE Dept. of Ed. OPA, Alice Fournell, Pres.
- ◇ Nebraska EOPA, Carol Reed, Pres.
- ◇ Nebraska EOPA—PP, Deb Ryan, Pres.
- ◇ Omaha EOPA, Noretta Howard, Pres.
- ◇ Ozarks Area AEOP (MO), Rosalee Willis, Pres.
- ◇ Peoria AEOP (IL), Jackie Voorhees, Pres.
- ◇ The *FROLIK*ers PP Assoc. (NE), Jan Harris, Pres.
- ◇ UNOPA (NE), Peg Johnson, Pres.
- ◇ Wayne EOPA, Joyce Trevett, Pres.
- ◇ West Suburban AEOP (IL), Jeanne Jasek, Pres.
- ◇ Wichita AEOP (KS), Brenda Decker, Pres.

## 2009-10 Special Dates to Remember



- May 15 — Filing Date for PSP Applications
- July 5-9 — NAEOP Annual Conference, Kansas City, MO
- October 15-17 — Illinois State Conference, Eastland Suites, Urbana, IL
- October 22, 2010 — Nebraska EOPA Workshop, Lincoln, NE
- October 22-23 — Kansas EOPA Fall meeting, Pittsburg, KS
- October 28-30 — Missouri AEOP Conference, Blue Springs, MO

## Welcome!

Please join me in welcoming the following new members:

- |                          |                    |                         |
|--------------------------|--------------------|-------------------------|
| Linda Wallis, KS         | Anita Bean, MO     | Susan Brooker, MO       |
| Amy Farr, MO             | Candace Koner, MO  | Deborah Lynn, MO        |
| Maureen Niedringhaus, MO | Joann Artz, NE     | Cherry Cornell, NE      |
| Carol Jaber, NE          | Carol Thompson, NE | Kathleen Weskirchen, NE |

Keep in mind, any new members who allow me to be their recruiter, can receive a \$5 discount on their membership fee. They, or you, can contact me or send their membership form to me with a check for \$40 and I will cover the rest!

## Recruit!

## NAEOP 2010 NOTES

COMING SOON!

or if you wish to be "on call" to help us out, please let us know.

Aren't you excited? In just a few short weeks, many of us will be gathering at the 2010 NAEOP Conference! Registrations continue to come in and for those of you that haven't gotten yours in yet...there's still time! Information is available online through the NAEOP web site or you can contact any of the conference co-chairs for more information.

For the individuals that are attending the conference, we are looking for volunteers to help in several areas. If you are interested in helping with Institute, Briefings, PSP Rehearsal

SEE YOU IN KANSAS CITY!

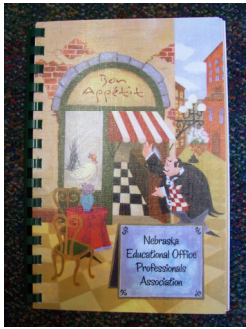
Our contact information is:

Lisa Morehouse, CEOE  
2010 Institute & Briefings Co-Chairman  
lmoreho@lps.org

Charlotte Zeller, CEOE  
2010 Institute & Briefings Co-Chairman  
czeller@ksde.org



# State Fund-raisers



NEOPA's (Nebraska) cookbook supply is still holding. At only \$10.00, these cookbooks are an excellent inexpensive gift for any occasion. If you are interested in purchasing a cookbook, with some wonderful recipes, please contact either Linda Luedtke, [lluedtke1@unl.edu](mailto:lluedtke1@unl.edu) or Barbara Homer, [bhomer@mail.unomaha.edu](mailto:bhomer@mail.unomaha.edu).

Kansas is holding a raffle to raise money for the 2010 NAEOP conference. The brown and cream tone afghan is 54 X 72 inches. Tickets are \$1.00 each or \$5.00 for 6 and will be available through the end of May (I bought my tickets) with the drawing being held in June at the Kansas board meeting. For more information feel free to contact Charlotte Zeller at [czeller@ksde.org](mailto:czeller@ksde.org).



NAREOP's 2010 service project will be partnered with NAEOP. Items will go to two child advocacy centers, (one in Illinois and one in Missouri). An example of items needed are Wal-Mart and McDonalds gift cards, postage (Forever) stamps, board games for young children, Nerf footballs and baseballs and Play Doh. For a complete list or more information, contact Martha Carson at [marthavcarson@aol.com](mailto:marthavcarson@aol.com).

We are eager to hear of fund-raisers taking place in other states. If your state is hosting a fund-raiser, please contact me with the details so I can add those to our next update.

## Thoughts, Prayers, Etc.

Wouldn't you like to make NAEOP Past President Butch Bender's day? All you need to do is sit down and write her a little note or just sign your name to a thinking of you card. She loves hearing from her NAEOP family and telling others about each one of us as they see her greetings! Butch's address is: The Lutheran Home, 7511 University Ave. – Room #E229, Cedar Falls, IA 50613.

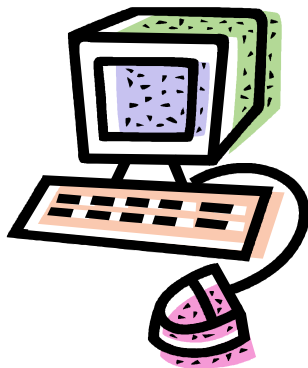
in April. Cards can be mailed to Billie at 17010 4th Ave. NE, Shoreline, WA 98155-4920 or Matt's mother, Shauna Gumbel, who is also a NAEOP member at 1550 SW 17th Ave., Oak Harbor, WA 98277.

Many of us know Billie Mikesell (WA). Billie's grandson, Matt Gumbel, passed away on April 24th after a long fight with burns sustained from the Tesoro Oil Refinery explosion earlier

Those of us who have been attending NAEOP for awhile, will remember Doris Merriman, Nebraska's 1990-91 State President (many of us referred to her as "smiley"). Doris passed away April 29. Sympathies can be sent to Doris' son Joel at 6528 Pine Ridge Rd., Elkhorn, NE 68022.



## Central Area Web Sites



Our Central Area Web sites have changes from time to time. If you've not taken a look lately, make sure to do so today! They're also noted on NAEOP's Web site under the "affiliations" tab along with all other NAEOP affiliates Web sites. They have a wealth of information so check them out!

- Illinois: [www.iaeop.com/](http://www.iaeop.com/)
- Indiana: <http://iaeop.lcsc.k12.in.us/>
- Kansas: <http://kaeop.org/>
- Missouri: <http://www.maeop.net>
- Nebraska: <http://neopa.unl.edu>



# National Updates

The ladies who work for us at our National Office are hard at work preparing for our National Conference in Kansas City. There are registrations to process, conference booklet to produce, PSP recipients to be approved and prepared for, certificates to be made, and the list goes on and on and on.

Imagine having their jobs. Angela has a different supervisor every year (NAEOP President). I know how difficult it is to have a new supervisor. They all have different styles and some are definitely easier to work for than others. I admire Angela's ability to work with and support not only her ever changing supervisors, but also the ever changing boards.

I also know, first hand, that Jenny, Debbie, and Lois are blessed with new personalities to work with each year. Jenny has been outstanding to work with this year with the Affiliations portion of my duties. She always keeps me well informed and on top of things.

She also was wonderful about sending reminders to the affiliates (as Pam did to the board) for issues of Keeping Affiliates Active which increased the quantity of articles for each issue.

Debbie helps each board member out with her expertise when it comes to the budget. She has been a life-saver many times over. She's also quick with a kind word and a smile.

Lois never seems to tire of the endless PSP questions sent her way. She knows the program inside out and backwards. Lois works closely with the PSP Committee Chairman. While this may be the same person for a number of years, it changes at least every four years.

If you're ever planning a trip through Kansas, it would be well worth your time to take a detour through Wichita so you can see the NAEOP Office and the Jackie Evans Memorial Garden. The ladies in the office would be happy to take a few minutes to give you a tour.



NAEOP  
Professional  
Standards Program  
PowerPoint  
Presentation  
2003

Revised, January  
2009

\$10.00  
(shipping included)

## Professional Standards Program

PSP Forms are now available on disk.

Send a formatted disk to:

NAEOP

P.O. Box 12619

Wichita, KS 67277-2619

Designate if for PC or Macintosh.

Forms are in Microsoft Word

## NAEOP Membership Update

The next membership report is due in **August**. As of May, the Central Area had a total of 468 active NAEOP members. This total reflects an increase since February. The numbers fluctuate during the year. The breakdown by state is: Illinois – 94 (same); Indiana – 36 (down 1); Iowa – 19 (same); Kansas – 73 (down 1); Missouri – 74 (up 4); Nebraska – 172 (up 5). Please continue to welcome new NAEOP members. And for those who are coming up on those renewal deadlines — keep your membership continuous.

It is important to recruit all year long! **Keep in mind that as a bonus, if you allow me to sponsor/recruit a brand new NAEOP member, I would be happy to pay \$5 of their membership fee.**

# Pamper Yourself

- \* Choose three fabulous chocolates and savor them slowly.
- \* Take a scented bath by candlelight.
- \* Give yourself a day off during the week. Stay in bed and do nothing!
- \* Subscribe to a magazine you've always wanted.
- \* Put a welcome mat outside your door.
- \* Plan to attend a Memorial Day celebration away from home (leave the mess to someone else).
- \* Go to a family-style community supper at a church, firehouse, or school.
- \* Lie on the floor and put your feet up on the bed. Close your eyes and breathe, and relax.
- \* Play catnip games with your pussycat.
- \* Spend the evening petting your kitty.



- \* Beg off at least one out of every four family events.
- \* Treat yourself to a new electric toothbrush.
- \* Twist Oreos apart and eat only the frosted halves. Don't forget the milk!
- \* Look through a kaleidoscope and enjoy the colorful, changing image in the little round glass.



- \* Do not try to be as thin as a model.
- \* Wear cheerful rubber boots to keep your feet dry in the rain.
- \* Keep a tube of anti-itch ointment by your bed for middle-of-the-night mosquito bites.
- \* Take an early morning, barefoot walk on grass that's still dewy.
- \* Give yourself permission to succeed!

# Inspiration

- The Cracked Pot -

An elderly Vietnamese woman had two large pots, each hung on the ends of a pole which she carried across her neck.

One of the pots had a crack in it while the other pot was perfect and always delivered a full portion of water.

At the end of the long walks from the stream to the house, the cracked pot arrived only half full.

For a full two years this went on daily, with the woman bringing home only one and a half pots of water.

Of course, the perfect pot was proud of its accomplishments.

But the poor cracked pot was ashamed of its own imperfection, and miserable that it could only do half of what it had been made to do.

After two years of what it perceived to be bitter failure, it spoke to the woman one day by the stream.

"I am ashamed of myself, because this crack in my side causes water to leak out all the way back to your house."

The old woman smiled.  
"Did you notice that there are flowers on your side of the path, but not on the other pot's side?"

"That's because I have always known about your flaw, so I planted flower seeds on your side of the path, and every day while we walk back, you water them." for two years I have been able to pick these beautiful flowers to decorate the table.

Without you being just the way you are, there would not be this beauty to grace the house."

Each of us has our own unique flaw. but it's the cracks and flaws we each have that make our lives together so very interesting and rewarding.

*Author Unknown*



# Lola's Note

In/out forms have been crossing my desk at way too rapid of a rate this closing season. For some reason the process seemed longer than most years. Probably because our apartment style building closed on a Saturday so I had to work two Saturday's in a row. Now that is history for another year and we're into the swing of summer conferences along with my Residence Life duties that I keep due to having one of the few buildings on campus that houses summer students. I'm thankful for that so I can continue to supervise a staff and a much smaller staff at that. We have the ability to do more and enjoy each other more when it's a smaller group.

Ramsey and Sarah are still in the process of securing a place to live out in or near Wallace. North Platte is looking more and more likely.

Wes has now been confirmed and made quite a haul in confirmation gifts. Thanks to his relatives, he's now the proud owner of an I-Pod Touch, third generation. His next hurdle (now that track is over) is to get to May 25th which is his last day of middle school.

I've sent out another offer for my last (I hope) academic year job. All in all, we had a successful year to have completed our summer and fall hiring, all the evaluations done, loads of work we did to assist in the Census process, finals kits delivered and checking all of the students out (and a few in and moving around for summer).

Summer Conferences have moved into one of my desks so far (the one closest to my office). This means I have the opportunity to interact with a staff I don't have to supervise. That can be loads of fun. The building I work in is used for guest housing during the summer which means we have a variety of people coming and going similar to a hotel operation. We do have some smaller groups stay here as well—usually the tamer groups.

This month I have inundated Lisa with e-mailed files. She also knows I'm close by in case she finds herself needing something.

For the first time in a long time, I find myself thankful that summer is here. I need some time to catch up on a few things and prepare myself for Kansas City. It's also time when I can go home and not worry as much about work. Soon enough I'll be preparing for two new RD's, a new RM, and my staff's fall training.

As I close for this month I'm excited about summer and the upcoming events. We don't have vacation plans so far. I do have ideas but will wait until Ralph's Census work is complete to spring them on him. We'll have to save some time to help Ramsey and Sarah with their big move. Hopefully we'll squeeze something else in this June or right after conference. I hope you all have a wonderful month with sunny skies and only needed rain.

*Lola*



NEOPA President Carol Reed (left) presented Pam Posey (center), and Angela Meyer (right) with Honorary Memberships in the Nebraska Educational Office Professionals Association (NEOPA) during the 2010 Central Area Professional Development Day