

# Central Area Update

F e b r u a r y 2 0 1 0



## 2010 Central Area PDD

The Nebraska Educational Office Professionals (NEOPA) invite you to their spring quilting bee (conference) on April 23-24, 2010, in Lincoln, Nebraska. Quilting bees are an opportunity for you to belong, contribute and excel, to share your advice, pick up a new skill and to further your professional career. We are offering you the chance to *“Piece Together Your Professional Career”* one block at a time.

listener, your confidence and leadership skills will grow. As each block is added to your quilt, you will increase your potential for career advancement with your new marketable skills. Can you feel the warmth that your quilt is going to provide to your work place and employers?

It is now time to register for the spring quilting bee. Registration materials can be found at <http://neopa.unl.edu>. In order to piece your quilt together your thread (form) must be in by **April 9, 2010**.

Don't forget to register for the extra quilt block – the Saturday evening Installation Banquet. If you are interested or need more information, please contact me at [lyoung5@unl.edu](mailto:lyoung5@unl.edu).

*Friends are threads of gold in the quilt of life*



### Inside this issue:

2010 CAPDD Central Area Breakfast	1
Affiliates Welcome 2010 Special Dates	2
NAEOP 2010 Notes	2
State Fund-raisers Thoughts & Prayers Central Area Web sites	3
National Updates Membership Update	4
Pamper Yourself Inspiration	5
Lola's Note	6

The centerpiece of each quilt will be the fabric (session) provided by our keynote speaker, Michelle Roggach, entitled *“Communication Quilt: All the Pieces for Success.”* In the afternoon quilters (participants) will be able to pick their own fabrics: *“Ethics in Business,” “Escape from Meeting Hell: Running a Productive Meeting,” “Team Building,”* or *“Effective Public Speaking.”*

Once your fabrics are chosen your quilting (networking/learning) has begun. Your quilt will start to grow. As you continue stitching together your quilt, you will become a better

## Central Area Breakfast

Now that we have our Winter 2009, issue of the NES Connector, we can truly begin making our personal plans for the 2010 NAEOP Conference in Kansas City, MO! I'm sure I don't need to remind you of the importance of attending the Central Area Breakfast Meeting. Along with the fantastic fellowship we enjoy each year, we will also be voting for actual members to NAEOP's various committees! Of course we will also recognize those who have attained PSP goals, Central Area President's and Central Area members who have been honored with special awards from their state associations (remind your state president to inform me of

those individuals) and welcoming our incoming Central Area Director, Lisa Morehouse.

Act now—fill out that registration form (making sure to register for the Central Area Breakfast) and send it in. Early Bird registration deadline is April 15, 2010, and you must register by April 30, 2010, to be listed in the annual report.

I look forward to seeing each one of you in July and having you join me in celebrating the accomplishments of our outstanding Central Area members!



# Affiliates

# Central Area Update



Congratulations to those Central Area Affiliates who have recently affiliated for the 2009-10 year. They are:

- ◇ Missouri Association of Educational Office Professionals, Debbie Gieb, President
- ◇ Kansas State Department of Education AEOP, Gwen Kramerl, President.

◇ Wayne Educational Office Professionals Association, (NE), Joyce Trevett, President.

There are still a number of organizations in the Central Area who have not affiliated. If your organization has not yet been listed, please contact your organization's president and give her/him a reminder to do so soon.



# Recruit!

# Welcome!

Please join me in welcoming the following new members:

- ◇ Sue Wilber, IA
- ◇ Brenda Decker, KS
- ◇ Sandi Czeranko, NE
- ◇ Susann Wenzl, NE
- Brenda Pfarr, IN
- Tanya Avant, NE
- Michelle Haynes, NE

Keep in mind, any new members who allow me to be their recruiter, can receive a \$5 discount on their membership fee. They, or you, can contact me or send their membership form to me with a check for \$40 and I will cover the rest!

# 2009-10 Special Dates to Remember



April 8-10 — Missouri AEOP Spring Workshop, Hannibal, MO

April 23-24 — CAPDD/NEOPA Spring Workshop, Lincoln, NE

April 9 — CAPDD Registration Deadline

May 1 — Affiliates renewal deadline

April 15-16 — Indiana AEOP Spring Conference, Indianapolis, IN

July 5-9 — NAEOP Annual Conference, Kansas City, MO

April 16-18 — Illinois AEOP Spring Conference, Countryside, IL



# NAEOP 2010 NOTES

Our 2010 Conference Co-chairs have arranged another meeting for the state leaders at the Conference site in Kansas City for February 27. There will, of course, be another meeting for this group in conjunction with our Central Area Professional Development Days in Lincoln this coming April.

It was refreshing to see everything in print in the Winter 2009, issue of the NES Connector. The time is drawing near and hopefully each state has their plans solidified and fund-raising either completed or well underway.

The pins have been ordered and we anxiously await

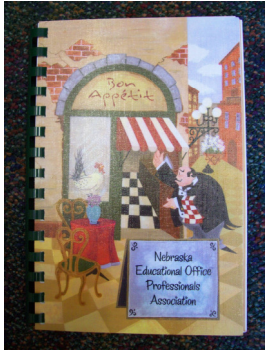
their delivery. Pages 1 and 18 of the NES Connector will give you an example of their design.

Don't forget while finishing up your state's planning to fill out and turn in your registration form for the conference. The Early Bird registration deadline is April 15 and you must be registered by April 30 to be listed in the annual report.

If you haven't ordered your conference shirt, make sure to send that order in to Iris Maxell by June 4, 2010, making your check payable to Annette Miller. The order form is on page 8 of the NES Connector.



# State Fund-raisers



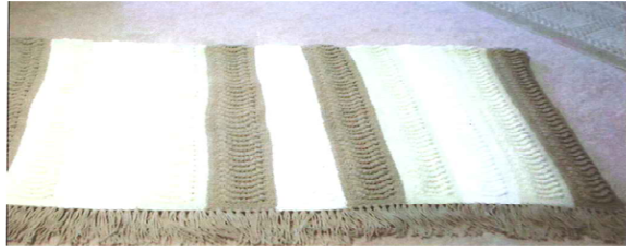
While Christmas is over, Mother's Day is on the horizon. NEOPA (Nebraska) still has cookbooks for sale and they would make a wonderful, long lasting Valentine. These cookbooks are only \$10.00 each making them an excellent inexpensive Valentine. If you are interested in purchasing a cookbook, contact

either Linda Luedtke, [lluedtke1@unl.edu](mailto:lluedtke1@unl.edu) or Barbara Homer, [bhomer@mail.unomaha.edu](mailto:bhomer@mail.unomaha.edu).

NAREOP and NAEOP are partnering for the NAREOP service project for the 2010 conference. Items will go to two child advocacy centers, one in Illinois and one in Missouri. If you would like to donate items and bring them to CAPDD, please do so. Some items needed are Wal-Mart and McDonalds gift cards, postage (Forever) stamps, board games for young children, Nerf footballs and baseballs and play doh. For a complete list or more information, contact Martha

Carson at [marthavcarson@aol.com](mailto:marthavcarson@aol.com).

Kansas is holding a raffle to raise money for the 2010 NAEOP conference. The brown and cream tone afghan is 54 X 72 inches. Tickets are \$1.00 each or \$5.00 for 6 and will be available through the end of May with the drawing being held in June at the Kansas board meeting. For more information feel free to contact Charlotte Zeller at [czeller@ksde.org](mailto:czeller@ksde.org).



We are eager to hear of fund-raisers taking place in other states. If your state is hosting a fund-raiser, please contact me with the details so I can add those to our next update.



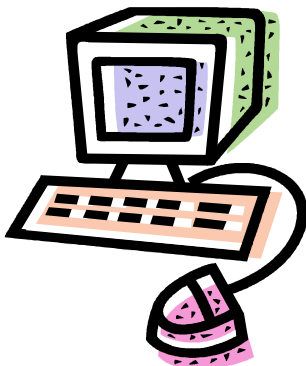
## Thoughts, Prayers, Etc.

Time to send another note to NAEOP Past President Butch Bender! Butch's days are much brighter when she receives greetings from her NAEOP family. Her address is: The Lutheran Home, 7511 University Ave. – Room #E229, Cedar Falls, IA 50613.

Dorothy Bertrand's husband, Harry, had quadruple heart by-pass surgery January 29th. He is slowly recovering. Get well wishes can be sent to 1245 Marilyn Dr., Cape Girardeau, MO 63701-3640.



## Central Area Web Sites



Have you taken a minute to look at the wonderful Web sites our Central Area states are responsible for? These Web sites are also noted on NAEOP's Web site under the "affiliations" tab along with all other NAEOP affiliates Web sites. They have a wealth of information so check them out!

- Illinois: [www.iaeop.com/](http://www.iaeop.com/)
- Indiana: <http://iaeop.lcsc.k12.in.us/>
- Kansas: <http://kaeop.org/>
- Missouri: <http://www.maeop.net>
- Nebraska: <http://neopa.unl.edu>

# National Updates

Greetings from the NAEOP National Office! This time of year is super busy for our office. Over the next few months we will be completing final preparations for the conference in July and that begins now with registration forms starting to come in. We are very excited that this year's event is so close to home for us and I'm happy to report that Debbie, Jenny, Lois, and I will all be in attendance this year. I sure hope that all of you from the Central Area are able to attend as well.

I would like to take a moment to remind you of several things associated with your membership in NAEOP. If you are not already signed up for our member listserv, I encourage you to do so. This is a great networking tool and one that is free to our members. It is very easy to sign up and you can do so by visiting [www.naeop.org/mail.htm](http://www.naeop.org/mail.htm).

We also have an area of our website for state and local newsletters. It would be great to see some from the Central Area so feel free to send them via email to myself ([angela@naeop.org](mailto:angela@naeop.org)) or to our Affiliate Coordinator, Jenny Jackson ([affiliates@naeop.org](mailto:affiliates@naeop.org)). You



NAEOP  
Professional  
Standards Program  
PowerPoint  
Presentation  
2003

Revised, January  
2009

\$10.00  
(shipping included)

can also see what is going on in other areas and for each council by visiting those pages and reading their newsletters!

The Members Only section of our website has information such as the award and scholarship applications, the association and foundation bylaws, as well as our Networking & PSP Surveys. I encourage you to visit this section of the website – please contact the National Office for login information.

I hope each of you have received your copy of the winter *NES Connector* and have had a chance to read my article regarding iGive.com. This is a great avenue to raise money for the association at no cost to you. To date, I have raised a little over \$13 by doing normal online shopping. Imagine how much we could benefit NAEOP if everyone participated! If you have any questions about this, please let me know.

Please know that the national office staff is here to serve you, the members of NAEOP. If you have questions that come up don't hesitate to contact us. We love hearing from you and do our best to accommodate your needs in a timely fashion. Again, I do hope most of you are able to join us in Kansas City for a great conference and I look forward to seeing you there!

Angela Meyer  
NAEOP Executive Director

## Professional Standards Program

PSP Forms are now available on disk.

Send a formatted disk to:

NAEOP

P.O. Box 12619

Wichita, KS 67277-2619

Designate if for PC or Macintosh.

Forms are in Microsoft Word

## NAEOP Membership Update

The next membership report is due in **May**. As of February, the Central Area had a total of 461 active NAEOP members. This total reflects a decrease since February. The numbers fluctuate during the year. The breakdown by state is: Illinois – 94 (down 1); Indiana – 37 (down 1); Iowa – 19 (down 1); Kansas – 74 (same); Missouri – 70 (down 3); Nebraska – 167 (down 1). Please continue to welcome new NAEOP members. And for those who are coming up on those renewal deadlines — keep your membership continuous.

It is important to recruit all year long! **Keep in mind that as a bonus, if you allow me to sponsor/recruit a brand new NAEOP member, I would be happy to pay \$5 of their membership fee.**

# Pamper Yourself

- \* Instead of feeling left out when other's receive flowers, send yourself flowers and enjoy!



- \* Serve breakfast orange juice in wine glasses.
- \* Take advantage of opportunities when they occur.
- \* Tell your partner what's bothering you.
- \* Rub sore muscles with a pain-relieving liquid or gel.
- \* Alter your look (hairstyle, makeup, clothes) as you get older.
- \* Go outside and get some fresh air!

- \* Wear cheerful printed rubber boots to keep your feet dry in the rain.
- \* Put a night-light in your bathroom
- \* Treat yourself to a pot large enough to boil the right amount of water for pasta.
- \* Decide not to feel guilty for your "perceived" shortcomings.
- \* Leave the lifting to someone else.
- \* Put a clock in your bathroom.
- \* Listen to your favorite radio station while getting ready for your day.
- \* When on a road-trip, stop at the road-side shops and buy yourself souvenirs.
- \* Ask for more sprinkles on your ice-cream cone and more cheese on your pizza.

# Inspiration



## THE Buzzard:

If you put a buzzard in a pen that is 6 feet by 8 feet and is entirely open at the top, the bird, in spite of its ability to fly, will be an absolute prisoner. The reason is that a buzzard always begins a flight from the ground with a run of 10 to 12 feet. Without space to run, as is its habit, it will not even attempt to fly, but will remain a prisoner for life in a small jail with no top.

## The Bat:

The ordinary bat that flies around at night, a remarkable nimble creature in the air, cannot take off from a level place. If it is placed on the floor or flat ground, all it can do is shuffle about helplessly and, no doubt, painfully.



## The Bumblebee:

A bumblebee, if dropped into an open tumbler, will be there until it dies, unless it is taken out. It never sees the means of escape at the top, but persists in trying to find some way out through the sides near the bottom... It will seek a way where none exists, until it completely destroys itself.

## People:

In many ways, we are like the buzzard, the bat, and the bumblebee. We struggle about with our problems and frustrations, never realizing that all we have to do is look up! That's the answer, the escape route and the solution to any problem! Just look up. Sorrow looks back, worry looks around, but faith looks up!

Don't worry about anything; instead, pray about everything. Philippians 4:6



# Lola's Note

How can it possibly be February already? While it seems like it's been winter forever, the months do fly by quickly. Before you know it, we'll all be together in Kansas City.

I'm beginning my preparation work for the next issue of Keeping Affiliates Active. Fortunately, I'll be able to work on it at home since I now have my laptop. Now if I can just get all of the articles in a timely fashion, I'll be just fine.

Ramsey has scheduled a couple of interviews at some smaller schools in western Nebraska. I'm certainly hopeful that he'll secure a position soon. Then we just need to worry about Sarah.

Wes is taking some beginning lessons in various foreign languages. This quarter is Spanish and he, of course, wants to try it out on us each evening. He also continues with his confirmation classes which will end in May when he will be confirmed into our church. He's pretty excited to finish things up. He also plans to go out for track which I'm sure will be entertaining. He has really long legs and is about as thin as could be without being ill.

As predicted, I have begun the hiring process for my summer staff as well as next academic year's staff. Evaluation forms have been distributed as well. To add a little icing to the cake, I've found myself in a must use vacation status making things a bit busier than anticipated.

While I continue to be anxious to present for MAEOP in April and at one of the 2010 NAEOP Briefings, I now have something new to look forward to; Diane Wasser, CEOE, Nebraska's incoming President has asked me to perform her installation ceremony at the closing banquet for CAPDD. Diane is a wonderful friend and I am truly honored to have been asked to do this for her. I've already come up with some ideas and have begun preparing the script!

In working with Debbie Hendricks on our briefing materials, I was reminded how terribly important networking is. While it's always on my mind and I always have good intentions, I find myself running short on the time necessary to fulfill my networking goals. I realize we all have a lot of irons in the fire (probably too many in most cases). So I sat back and thought about what I am currently doing to network and I decided I can count the monthly updates as networking. You're hearing from me and I hear back from a number of you. One day soon, I'll have time to work harder at my networking with non-NAEOP and those who are not co-workers.

As I close this month, my wish for each of you is that you remain healthy, stay comfortably warm, and safe! Remember, spring is just around the corner with green grass, leaves on the trees, flowers, and the shedding of our bulky winter coats!

*Lola*



NAEOP Past President Linda Tribble invited the board into her home following the January board meeting.

Among the beautiful Christmas Trees and various manger scenes this stood out as one of the most unique.

Thanks to Linda for sharing!